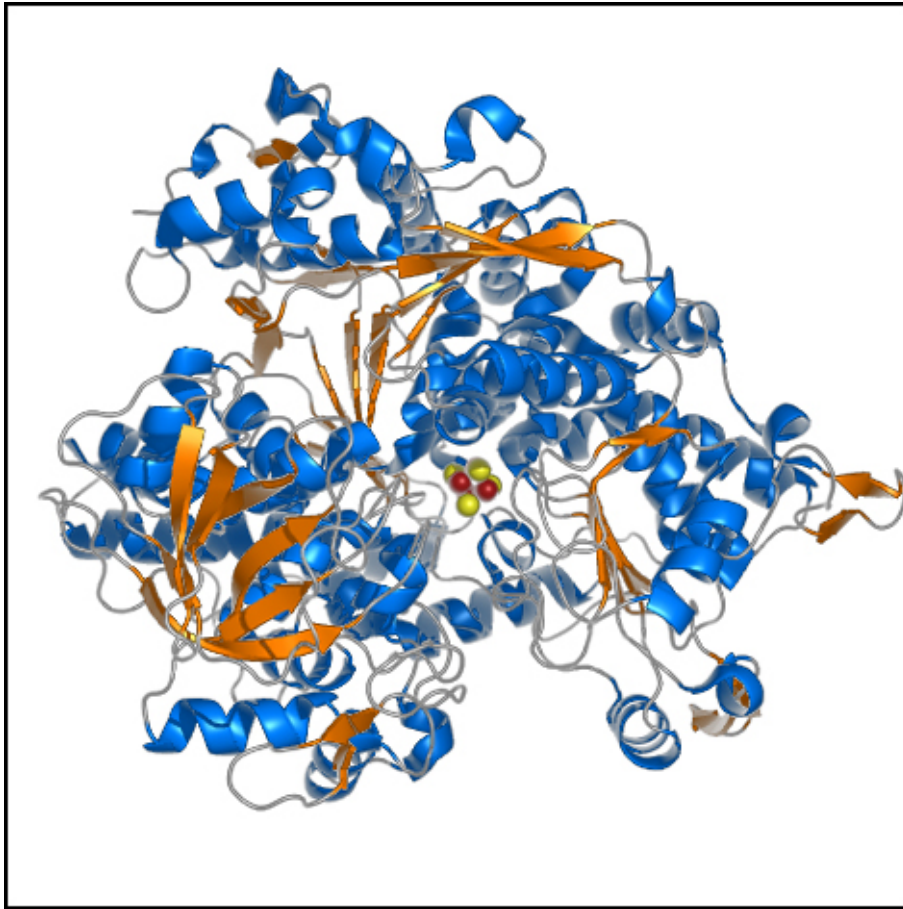


Human cytosolic aconitase / IRP1



References:

1. J Dupuy, A Volbeda, P Carpentrier, C Darnault, JM Moulis & JC Fontecilla-Camps. Crystal structure of human iron regulatory protein 1 as cytosolic aconitase. *Structure* (2006) **14**, 129-139.
2. WE Walden, AI Selezneva, J Dupuy, A Volbeda, JC Fontecilla-Camps, EC Theil & K Volz. Structure of dual function Iron Regulatory Protein 1 complexed with ferritin IRE-RNA. *Science* (2006) **314**, 1903-1908.