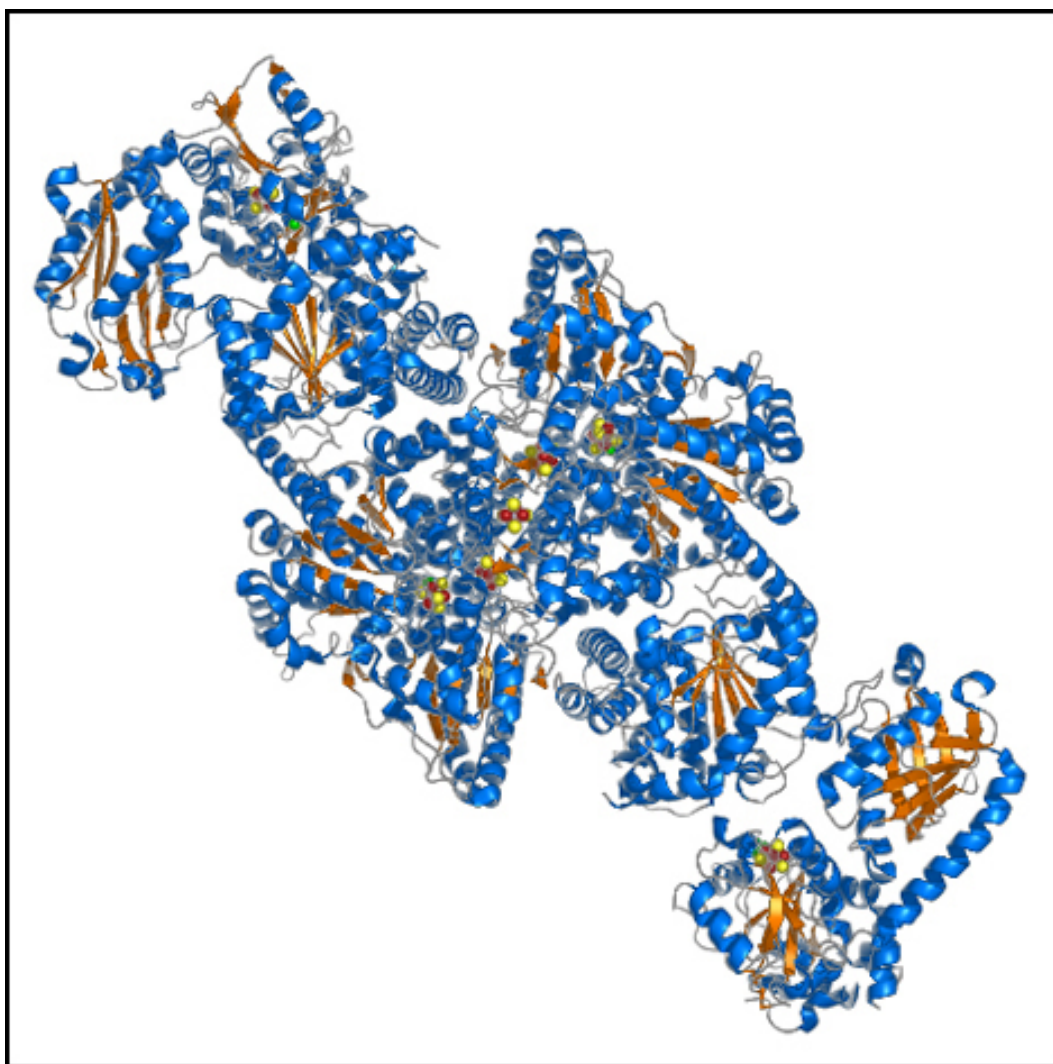


Moorella thermoacetica Acetyl CoA Synthase / CO dehydrogenase



References:

1. C Darnault, A Volbeda, EJ Kim, P Legrand, X Vernède, PA Lindahl & JC Fontecilla-Camps. Ni-Zn-[Fe₄-S₄] and Ni-Ni-[Fe₄-S₄] clusters in closed and open subunits of acetyl-CoA synthase/carbon monoxide dehydrogenase. *Nature Struct Biol* (2003) **10**, 271-279.
2. A Volbeda & JC Fontecilla-Camps. Crystallographic evidence for a CO/CO₂ tunnel gating mechanism in the bifunctional carbon monoxide dehydrogenase/acetyl coenzyme A synthase from *Moorella thermoacetica*. *J Biol Inorg Chem* (2004) **9**, 525-532.
3. P Amara, A Volbeda, JC Fontecilla-Camps & MJ Field. A quantum chemical study of the reaction mechanism of acetyl-coenzyme A synthase. *J Am Chem Soc* (2005) **127**, 2776-2784.
4. A Volbeda & JC Fontecilla-Camps. Structural bases for the catalytic mechanism of Ni-containing carbon monoxide dehydrogenases, *Dalton Trans* (2005) **21**, 3443-3450.
5. X Tan, A Volbeda, JC Fontecilla-Camps & PA Lindahl. Function of the tunnel in acetyl-coenzyme A synthase/carbon monoxide dehydrogenase. *J Biol Inorg Chem* (2006) **11**, 371-378.
6. P Amara, JM Mouesca, A Volbeda & JC Fontecilla-Camps. Carbon monoxide dehydrogenase reaction mechanism: a likely case of abnormal CO₂ insertion to a Ni-H bond. *Inorg Chem* (2011) **50**, 1868-1878.