



energie atomique • energies alternatives



# WORKSHOP

## “STRUCTURAL GLYCOSCIENCE: METHODS AND INSTRUMENTATION”

GRENOBLE, 29<sup>th</sup> JUNE and 1<sup>st</sup> JULY 2010

[www.ibs.fr/structural-glycoscience](http://www.ibs.fr/structural-glycoscience)

or

[www.esrf.eu/events/conferences](http://www.esrf.eu/events/conferences)

Glycoscience is a rapidly expanding and exciting field that is relevant to many areas of chemistry, biology and medicine. Glycans structure is of a direct importance since they are key structural elements in cell and in signalling events on their surface.

The workshop will train young scientists, from a chemistry or biology background, in the most up-to-date approaches for determining the structural and dynamic properties of carbohydrates, glycan binding receptors, analysis of their complexes and notably in the context of immunity and host-pathogen interaction.

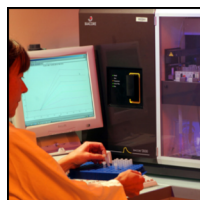
This workshop will be validated by 3 ECTS by the EDCSV doctoral school. Some fellowships are available for students.



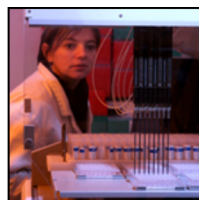
INSTITUT DE BIOLOGIE STRUCTURALE (IBS)



ESRF/ILL



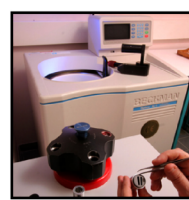
Surface Plasmon Resonance



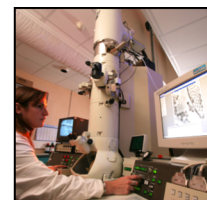
Crystallisation



NMR 800MHz



Analytical Ultracentrifugation



Electron Microscopy

### Confirmed Speakers

Pr. FRANCK FIESCHI *IBS (Grenoble, France)*

Dr. ERIC SAMAIN *CERMAV (Grenoble, France)*

Pr. STEVE PERKINS *University College London (London, UK)*

Dr. MATTHEW BOWLER *ESRF (Grenoble, France)*

Pr. JESÚS JIMÉNEZ BARBERO *CIB (Madrid, Spain)*

Dr. TREVOR FORSYTH *ILL (Grenoble, France)*

Dr. SERGE PEREZ *ESRF (Grenoble, France)*

Dr. BRUCE TURNBULL *University of Leeds (Leeds, UK)*

Dr. ANNE IMBERTY *CERMAV (Grenoble, France)*

Dr. NICOLE THIELENS *IBS (Grenoble, France)*

Dr. GUY SCHOEHN *UVHCI (Grenoble, France)*

Dr. HUGUES LORTAT-JACOB *IBS (Grenoble, France)*

Organizing comitee:  
Franck Fieschi,  
Anne Imberty,  
Serge Perez



[www.carmusys.iiq.csic.es](http://www.carmusys.iiq.csic.es)

“Carbohydrated Multivalent Systems  
as Tools to Study Pathogen  
Interactions with DC-SIGN”



<http://www.egsf.org/>

« *ESF EuroGlycoforum  
Research Network program* »

Contact and Information:  
Myriam Dhez  
[myriam.dhez@esrf.eu](mailto:myriam.dhez@esrf.eu)