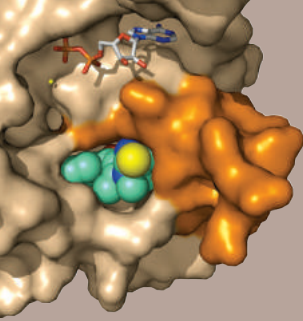




A molecular vision of life



[www.ibs.fr](http://www.ibs.fr)



## A RESEARCH CENTER FOR INTEGRATED STRUCTURAL BIOLOGY

The IBS explores the structure and dynamics of molecular complexes such as proteins and aims to decipher their biological function *in vitro* and in a cellular context.

The institute performs interdisciplinary research at the interface of biology, physics and chemistry, combining fundamental research, applied science and technological innovation.



## A EUROPEAN CENTRE OF EXCELLENCE

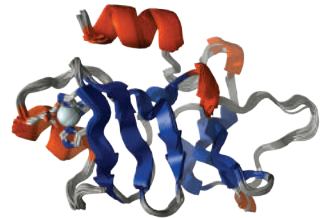
The IBS is member of the Partnership for Structural Biology (PSB) along with the ESRF, EMBL and ILL. The PSB is one of the Instruct Centres, a dynamic hub of structural biology facilities in Europe,

This collaboration brings together a remarkable expertise and a range of state-of-the-art equipment on a unique international campus.

## MAIN SCIENTIFIC AXES

The scientific activity of each of the 18 groups is related to 3 main scientific axes:

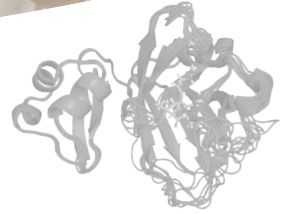
- Infection and Molecular Medicine
- Membrane Signaling and Transport
- Frontiers in Biophysics and Chemistry for Structural Biology



## TRAINING THROUGH RESEARCH

The IBS welcomes doctoral students and post-doctoral fellows and participates in european training courses and workshops.

Our scientists are involved in various teaching activities in different educational establishments including the Université Grenoble Alpes.



## ISO 9001 CERTIFIED SHARED FACILITIES



The IBS provides access to cutting-edge know-how and a unique infrastructure for integrative structural biology approaches from the molecular to the cellular level. The IBS operates a number of high tech platforms including X-ray crystallography, NMR, Cryo-Electron Microscopy.



They are open to the international scientific community (both French and European users can apply to Instruct for funding).

Most platforms have ISO 9001 quality certification and are open to industrial partners.

## IBS AT A GLANCE

270 people

65 researchers

30 postdocs

35 PhD students

90 engineers & technicians

18 research groups

3 H2020 grants

5 ERC grants

150 publications per year

25 valid patents

4 start-up

21 M€ consolidated budget

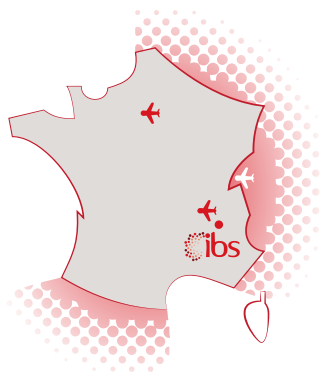
## A JOINT CEA-CNRS-UGA RESEARCH INSTITUT (UMR 5075)

Created in 1992, the IBS operates under the supervision of three partners:

- CEA: Commissariat à l'énergie atomique et aux énergies alternatives,
- CNRS: Centre national de la recherche scientifique,
- UGA: Université Grenoble Alpes.

### LOCATION

Located on the EPN science campus, an international science hub in Grenoble, the IBS takes full advantage of the proximity of the ESRF's X-rays and the ILL's neutrons, thus offering many possibilities of collaboration with scientists from around the world.



The institute is situated at the heart of the French Alps, 45 minutes from the international airport of Lyon St Exupery, 2 hours from Geneva, 3 hours from Paris.

GPS coordinates of the EPN  
science campus entry:  
45°12'30" N 5°41'46" E  
45.208208; 5.696234



### INSTITUT DE BIOLOGIE STRUCTURALE

71 avenue des Martyrs  
CS 10090  
F-38044 GRENOBLE Cedex 9

Tél. +33 (0) 4 57 42 85 00  
Fax +33 (0) 4 76 50 18 90

email : name.surname@ibs.fr

[www.ibs.fr](http://www.ibs.fr)

