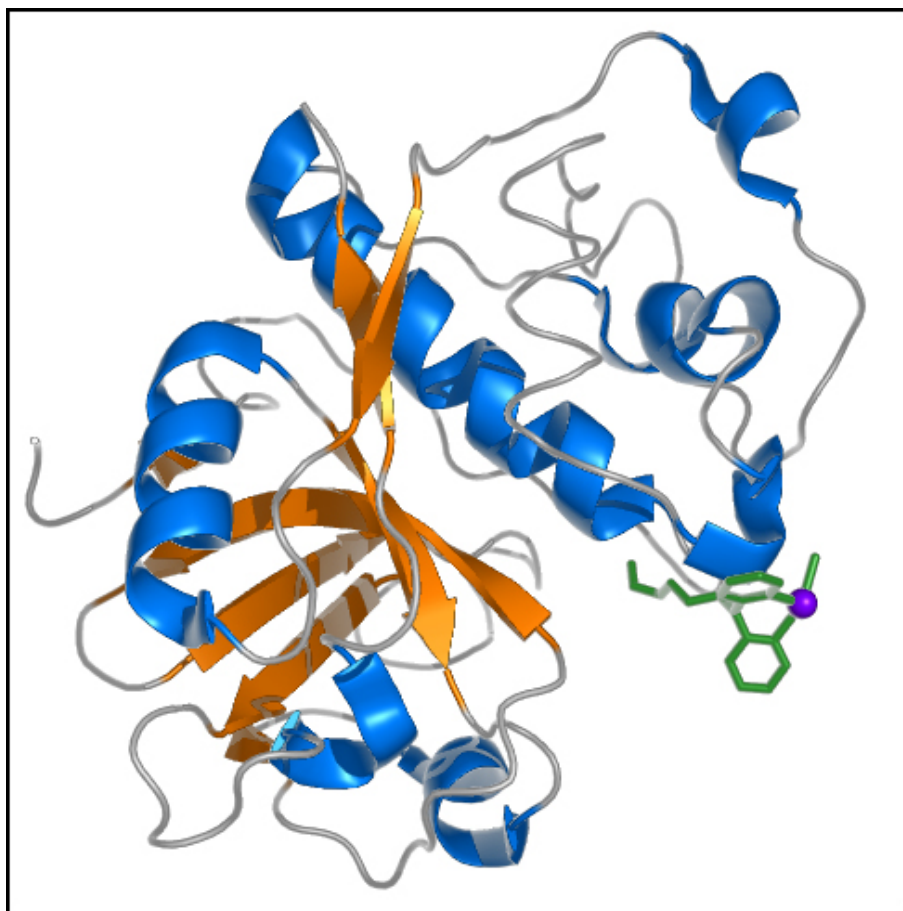


Bovine β -lactoglobulin/Ru(III)



1. Chevalley A, Cherrier MV, Fontecilla-Camps JC, Ghasemi M, Salmain M. Artificial metalloenzymes derived from bovine β -lactoglobulin for the asymmetric transfer hydrogenation of an aryl ketone – synthesis, characterization and catalytic activity. *Dalton trans* (2014) **43**, 5482-5489.
2. Cherrier MV, Engilberge S, Amara P, Chevalley A, Salmain M, Fontecilla-Camps JC. Structural Basis for Enantioselectivity in the Transfer Hydrogenation of a Ketone Catalyzed by an Artificial Metalloenzyme. *Eur J Inorg Chem* (2013) 3596-3600.