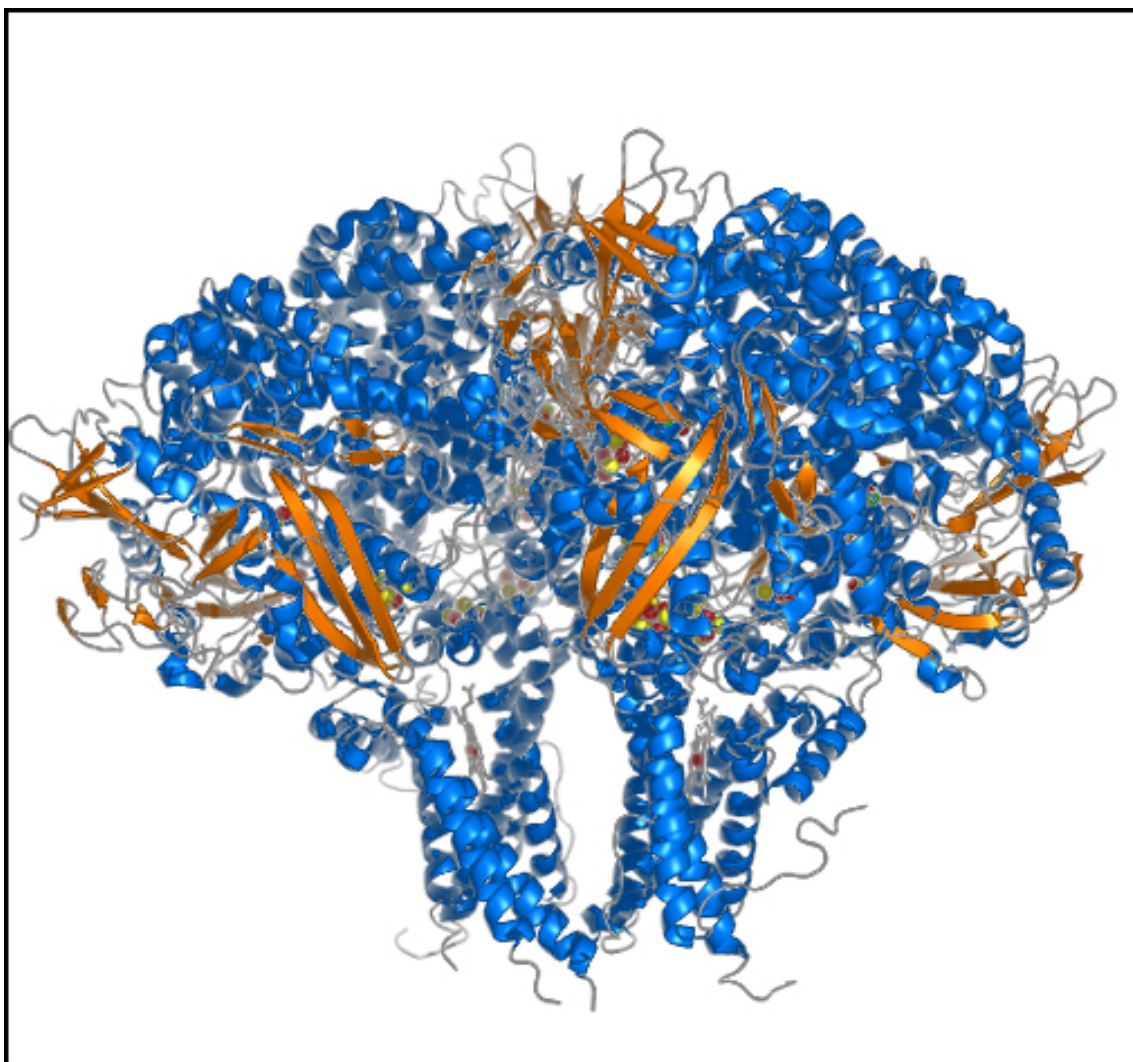


Escherichia coli hydrogenase-1 / cytochrome *b* complex



References:

1. A Volbeda, C Darnault, A Parkin, F Sargent, FA Armstrong & JC Fontecilla-Camps. Crystal structure of the O₂-tolerant membrane-bound [NiFe]-hydrogenase-1 from *Escherichia coli* in complex with its cognate cytochrome *b*. *Structure* (2013) **21**, 184-190.
2. RM Evans, A Parkin, MM Roessler, BJ Murphy, H Adamson, MJ Lukey, F Sargent, A Volbeda, JC Fontecilla-Camps & FA Armstrong. Principles of sustained enzymatic hydrogen oxidation in the presence of oxygen: the crucial influence of high potential FeS clusters in the electron relay of [NiFe]-Hydrogenases. *J Am Chem Soc* (2013) **135**, 2694-2707.
3. A Volbeda, JM Mouesca, C Darnault, M Roessler, A Parkin, FA Armstrong & JC Fontecilla-Camps. X-ray structural, functional and computational studies of the O₂-sensitive *E. coli* hydrogenase-1 C19G variant reveal an unusual [4Fe-4S] cluster. *Chemical Communications* (2018) **54**, 7175-8.