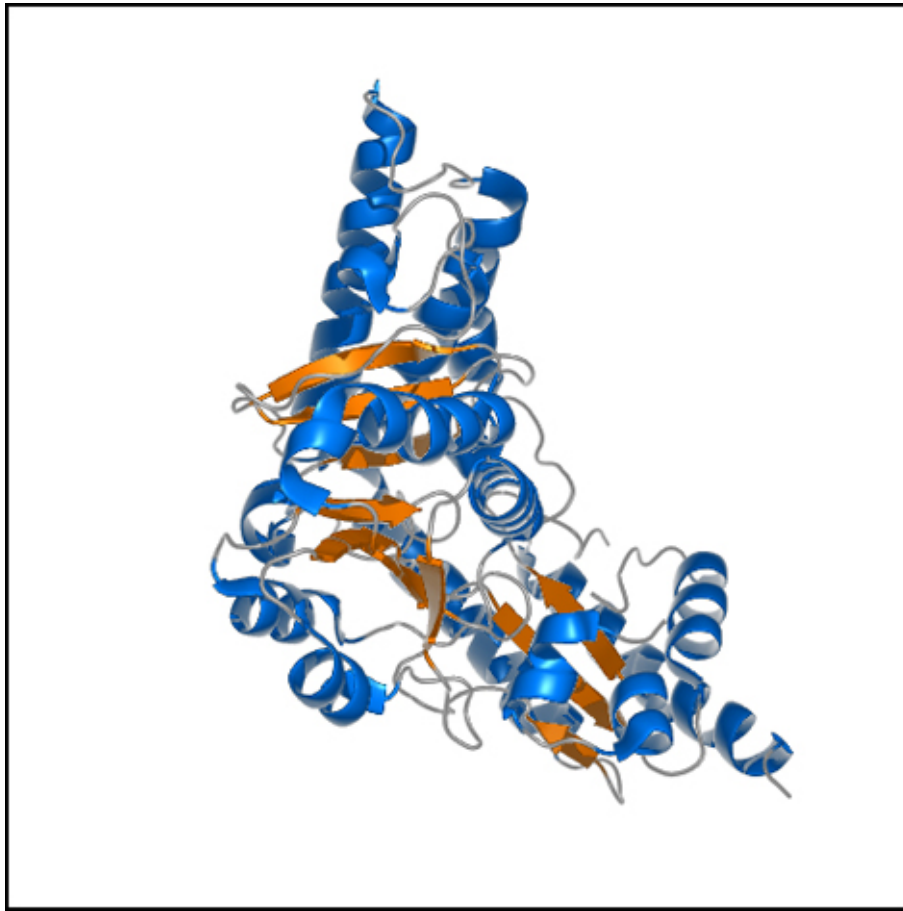


Archaeoglobus fulgidus L-cysteine desulfurase



Yamanaka Y, Zeppieri L, Nicolet Y, Marinoni EN, de Oliveira JS, Odaka M, Dean DR, Fontecilla-Camps JC. Crystal structure and functional studies of an unusual L-cysteine desulfurase from *Archaeoglobus fulgidus*. *Dalton Trans* (2013) **42**, 3092-2099.